

Colour combinations

BY ANNALIE PRINSLOO (APRIL 2015)

When one combine two colour genes in one rat one can get some interesting colours like:

Black based colours

RUSSIAN DOVE (a/a b/b d/d or a/a d/d m/m)

A warm pinkish grey colour with darker heathering. Belly colour to match top. Eye colour is black. – S.A.R.F.C. Standards

RUSSIAN DOVE (a/a d/d m/m)



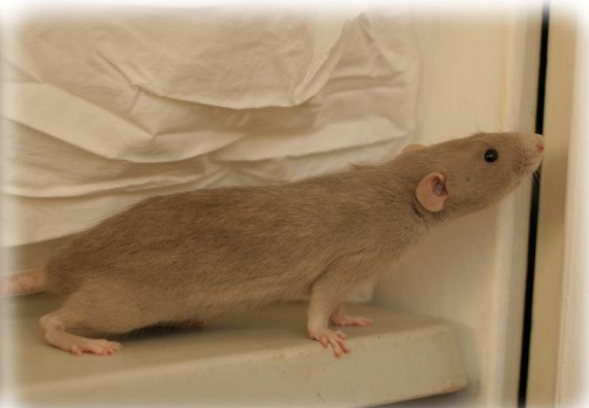
Dumbo russian dove self doe



Russian dove self buck



Russian dove self kitten



Dumbo russian dove self doe

PLATINUM (a/a g/g m/m)

A pinkish dove grey colour. Belly colour to match top. Ears and tail to be grey. Eye colour is very dark ruby. Faults: Blueish tinge to colour. – S.A.R.F.C. Standards (as Lilac)

PLATINUM



Platinum self buck (a/a g/g m/m)



Platinum hooded doe (a/a g(c)/g(c) m/m)



Platinum hooded doe (a/a g(c)/g(c) mo/mo*

*mo = Australian mink



The doe to the left is the kitten in the middle in this picture. Australian mink starts off as beige, later darkening to mink. She started off as a greyish beige and later became a platinum colour.

COFFEE (a/a b/b m/m)

A rich creamy-brown caramel colour. Belly colour to match top. Eye colour is black. – S.A.R.F.C. Standards

COFFEE (a/a b/b m/m)



Coffee berkshire buck



Coffee self doe



Coffee kitten and his siblings



Coffee berkshire buck

HAVANA (a/a b/b m/m R/r)

A light warm brown colour. Belly colour to match top. Eye colour is mid ruby. – S.A.R.F.C. Standards

HAVANA (a/a b/b m/m R/r)



Havana berkshire doe



Havana variegated berkshire buck



Havana and mink



Havana berkshire kitten

RUSSIAN SILVER (a/a d/d g/g)

An even pale blue-grey colour with darker heathering. Belly colour to match top. Eye colour is black. – S.A.R.F.C. Standards

RUSSIAN SILVER



Russian silver berkshire buck (a/a d/d g/g)



Russian silver variegated berkshire doe (a/a d/d g(c)/g(c))



Russian silver kittens



Russian silver self doe (a/a d/d g(c)/g(c))

BLUE BEIGE (a/a d/d r/r)

Colour is a greyish beige, with a blue tint and blueish heathering. Belly colour to match top. Eye color is dark ruby. – S.A.R.F.C. Standards

SILVER (DARK) (a/a d/d p/p)

An even pale silver grey colour. Belly colour to match top. Eye colour is red. – S.A.R.F.C. Standards

DOVE (a/a b/b m/m)

A blueish dove grey colour. Belly colour to match top. Ears and tail to be grey. Eye colour is black. – S.A.R.F.C. Standards (as Lavender)

SILVER (LIGHT) (a/a g/g p/p)

An even pale silver grey colour. Belly colour to match top. Eye colour is red. – S.A.R.F.C. Standards

BLUE PEARL (a/a g/g m/m Pe/pe)

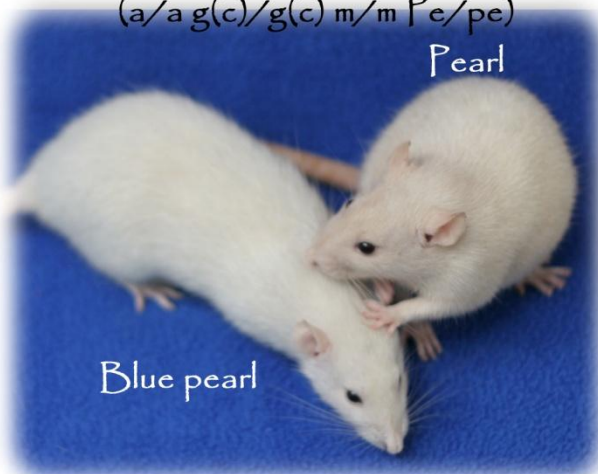
BLUE PEARL



Dumbo blue pearl berkshire buck
(a/a g(c)/g(c) m/m Pe/pe)
Pearl



Blue pearl self doe (a/a g/g m/m Pe/pe)



Blue pearl

Blue pearl and pearl does



Dumbo blue pearl self kitten
(a/a g/g m/m Pe/pe)

RUSSIAN BLUE PEARL (a/a d/d m/m Pe/pe)

RUSSIAN BLUE PEARL (a/a d/d m/m Pe/pe)



Dumbo russian blue pearl berkshire buck



Dumbo russian blue pearl berkshire doe

DARK BEIGE (a/a m/m r/r or a/a b/b r/r)

DARK CHAMPAGNE a/a m/m p/p or a/a b/b p/p)



Dark champagne self buck
(a/a m/m p/p)

Agouti based:

RUSSIAN DOVE AGOUTI (A/- b/b d/d or a/a d/d m/m)

RUSSIAN DOVE AGOUTI (A/- d/d m/m)



Dumbo russian dove agouti berkshire buck



Dumbo russian dove agouti self doe



Dumbo russian dove agouti self kitten

PLATINUM AGOUTI (A/- m/m g/g)

COFFEE AGOUTI (A/- b/b m/m)

HAVANA AGOUTI (A/- b/b m/m R/r)

Colour similar to cinnamon but with dark ruby eyes. The colour intensity is lighter. – S.A.R.F.C. Standards

RUSSIAN SILVER AGOUTI (A/- d/d g/g)

A cream fawn colour, evenly ticked with light grey hairs. Undercoat silver grey. Belly fur a pale silver colour. Eye colour is black. – S.A.R.F.C. Standards



BLUE FAWN (A/- g/g r/r)

Colour similar to blue agouti but with ruby eyes. The colour intensity is lighter. – S.A.R.F.C. Standards

RUSSIAN BLUE FAWN (A/- d/d r/r)

A warm orange-cream colour evenly ticked with silver blue guard hairs. Undercoat must show a blue cast. Belly fur is cream. Eye colour is ruby. – S.A.R.F.C. Standards

APRICOT AGOUTI (A/- d/d p/p)

A pale apricot colour, evenly ticked with silver guard hairs. Undercoat is an ice-blue colour. Belly fur is a pale cream colour. Eye colour is red. – S.A.R.F.C. Standards

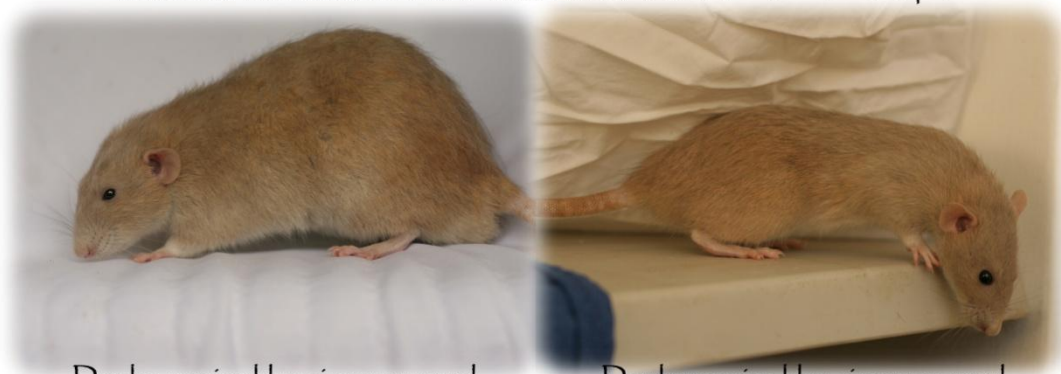
DOVE AGOUTI (A/- b/b m/m)

SILVER AMBER (A/- g/g p/p)

BLUE CINNAMON PEARL (A/- g/g m/m Pe/pe)

RUSSIAN BLUE CINNAMON PEARL (A/- d/d m/m Pe/pe)

RUSSIAN BLUE CINNAMON PEARL (A/- d/d m/m Pe/pe)



Dumbo russian blue cinnamon pearl
berkshire buck

Dumbo russian blue cinnamon pearl
berkshire doe

LYNX (A/- m/m r/r or A/- b/b r/r)

A medium fawn colour with a pink tinge and evenly ticked with dove grey guard hairs. Undercoat a pale grey colour. Belly colour silver. Eye colour is a very dark ruby. – S.A.R.F.C. Standards

DARK AMBER (A/- m/m p/p or A/- b/b p/p)



Dark amber self buck
(A/- m/m p/p)

C-locus

There are many combinations possible. A few are listed below:

RUSSIAN BLUE BISCUIT (a/a Bu/- c/c d/d)

RUSSIAN BLUE BISCUIT (a/a Bu/- c/c d/d)



Dumbo russian blue biscuit self buck



Russian blue biscuit kitten

CHOCOLATE AGOUTI POINT SABLE SIAMESE (A/- b/b c^s/c^s)



Chocolate agouti point sable siamese buck (right)
(A/- b/b c(s)/c(s))

RUSSIAN BLUE POINT SABLE SIAMESE (a/a c^s/c^s d/d)

RUSSIAN BLUE POINT SABLE SIAMESE (a/a c(s)/c(s) d/d)



Dumbo russian blue point sable siamese self doe



Russian blue point sable siamese self kitten

AMBER POINT SABLE SIAMESE (A/- c^s/c^s p/p)

AMBER POINT SABLE SIAMESE (A/- c(s)/c(s) p/p)



Amber point sable siamese self buck



Amber point sable siamese self kitten

BLACK EYED RUSSIAN BLUE POINT SABLE SIAMESE (a/a Be/Be c^s/c^s d/d)

BLACK EYED RUSSIAN BLUE POINT SABLE SIAMESE
(a/a c(s)/c(s) d/d)



Black eyed russian blue point sable siamese self buck



Black eyed russian blue point sable siamese self kitten

BLUE POINT SABLE SIAMESE (a/a c^s/c^s g/g)

BLUE POINT SABLE SIAMESE (a/a c(s)/c(s) g/g)



Blue point sable siamese self buck



Blue point sable siamese self kitten

RUSSIAN BLUE AGOUTI POINT SABLE SIAMESE (A/- c^s/c^s d/d)



Russian blue agouti point sable siamese self buck
(A/- c(s)/c(s) d/d)

RUSSIAN BLUE POINT SABLE HIMALAYAN (a/a c^s/c d/d)

RUSSIAN BLUE POINT SABLE HIMALAYAN
(a/a c(s)/c d/d)



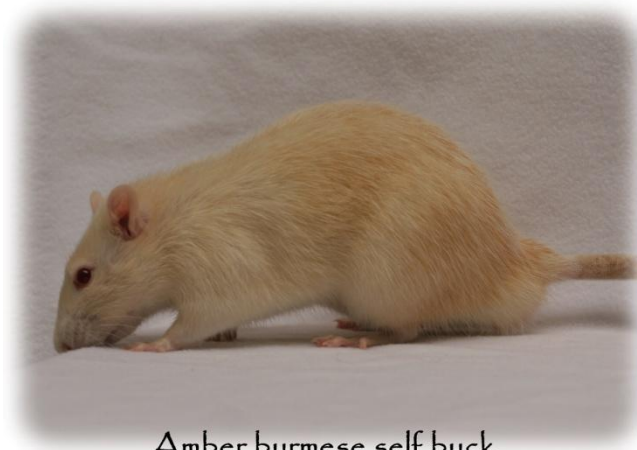
Dumbo russian blue point sable himalayan self buck



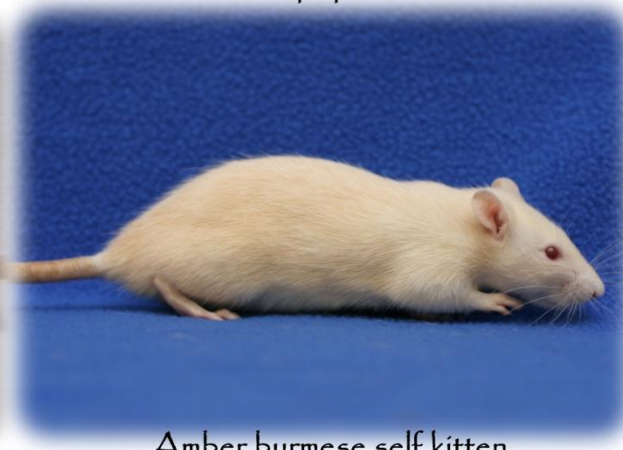
Dumbo russian blue point sable himalayan self kitten

AMBER BURMESE (A/- Bu/- c^s/c^s p/p)

AMBER BURMESE (A/- Bu/- c(s)/c(s) p/p)



Amber burmese self buck



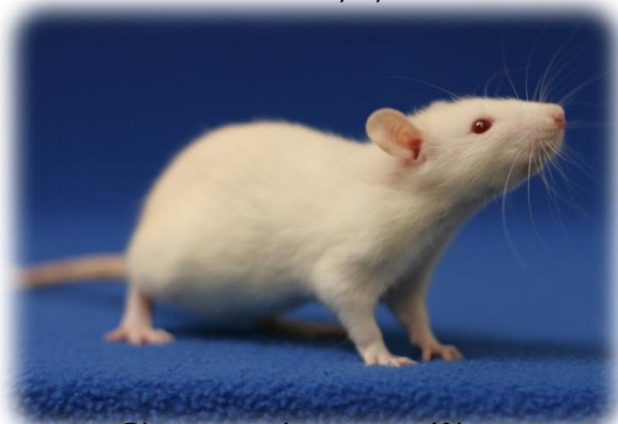
Amber burmese self kitten

CHAMPAGNE BURMESE (A/- Bu/- c^s/c^s p/p)

CHAMPAGNE BURMESE (a/a Bu/- c(s)/c(s) p/p)



Champagne burmese self doe



Champagne burmese self kitten

RUSSIAN BLUE BURMESE (a/a Bu/- c^s/c^s d/d)

RUSSIAN BLUE BURMESE (a/a Bu/- c(s)/c(s) d/d)



Dumbo russian blue burmese self doe



Dumbo russian blue burmese self kitten

RUSSIAN BLUE PWHEATEN BURMESE (A/- Bu/- c^s/c^s d/d)

RUSSIAN BLUE WHEATEN BURMESE (A/- Bu/- c(s)/c(s) d/d)



Russian blue wheaten burmese self doe



Dumbo russian blue wheaten burmese self kitten